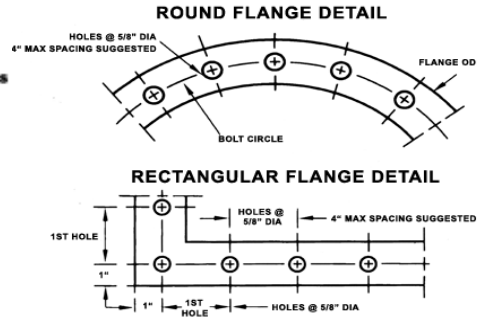
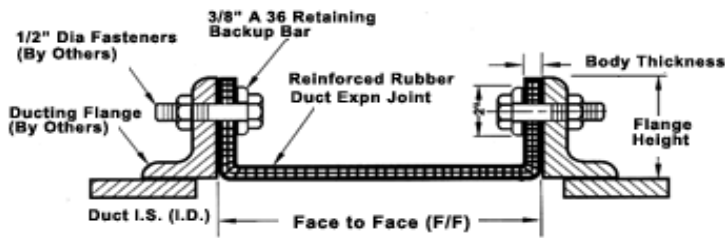


"U" STYLE RUBBER DUCT EXPANSION JOINT



TEMPERATURE FOR MATERIALS

- 250F: Neopren, Hypalon
- 300F: Butyl, EPDM
- 400F: Viton

MAXIMUM MOVEMENTS (IN)

6" F/F			9" F/F			12" F/F			16" F/F		
COMPRESSION	EXTENSION	LATERAL OFFSET	COMPRESSION	EXTENSION	LATERAL OFFSET	COMPRESSION	EXTENSION	LATERAL OFFSET	COMPRESSION	EXTENSION	LATERAL OFFSET
0.75	0.25	0.5	1.25	0.25	0.75	2.0	0.5	1.0	3.0	0.5	1.5

PRESSURE / VAC RATINGS

THK	PLIES	PRESSURE		
		PSIG	IN H ₂ O	EXCUR PSIG
1/8"	1	+/-1	+/-28	+/-2
1/4"	2	+/-3	+/-83	+/-5
3/8"	3	+/-5	+/-138	+/-8

The expansion joints are molded and free of splices.
The spring rates are very low.

CUSTOMER: _____
PROJECT: _____
ENGINEER: _____
CNTRCTR: _____
P.O. NO: _____



DESCRIPTION:

DRAWN BY:

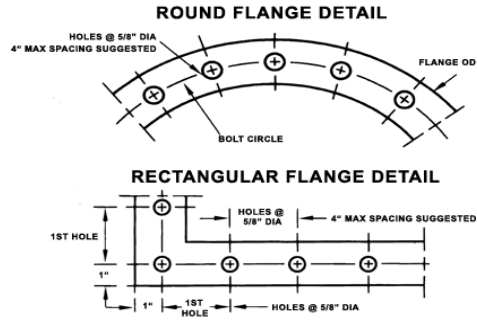
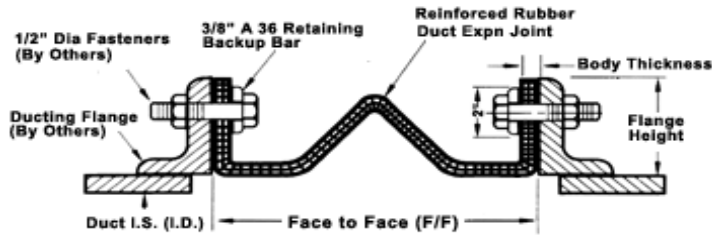
PB

DATE:

04/08

DWG NO.:

ARCH STYLE RUBBER DUCT EXPANSION JOINT



TEMPERATURE FOR MATERIALS

- 250F: Neopren, Hypalon
- 300F: Butyl, EPDM
- 400F: Viton

MAXIMUM MOVEMENTS (IN)

6" F/F			9" F/F			12" F/F			16" F/F		
COMPRESSION	EXTENSION	LATERAL OFFSET	COMPRESSION	EXTENSION	LATERAL OFFSET	COMPRESSION	EXTENSION	LATERAL OFFSET	COMPRESSION	EXTENSION	LATERAL OFFSET
2.25	1.25	1.25	3.0	1.5	2.0	4.0	2.0	2.5	5.0	2.75	3.0

PRESSURE / VAC RATINGS

THK	PLIES	PRESSURE		
		PSIG	IN H ₂ O	EXCUR PSIG
1/8"	1	+/-1	+/-28	+/-2
1/4"	2	+/-3	+/-83	+/-5
3/8"	3	+/-5	+/-138	+/-8

The expansion joints are molded and free of splices.
The spring rates are very low.

CUSTOMER: _____
PROJECT: _____
ENGINEER: _____
CNTRCTR: _____
P.O. NO: _____



DESCRIPTION:

DRAWN BY:

PB

DATE:

04/08

DWG NO.: