

\$4.00

PIPE GUIDES SLIDES AND ANCHORS



“Guiding Your Piping Decisions”



2315 W. HUBBARD ST. • CHICAGO, IL 60612 • 800-533-1024 • 312-738-3588 • FAX 312-421-6327

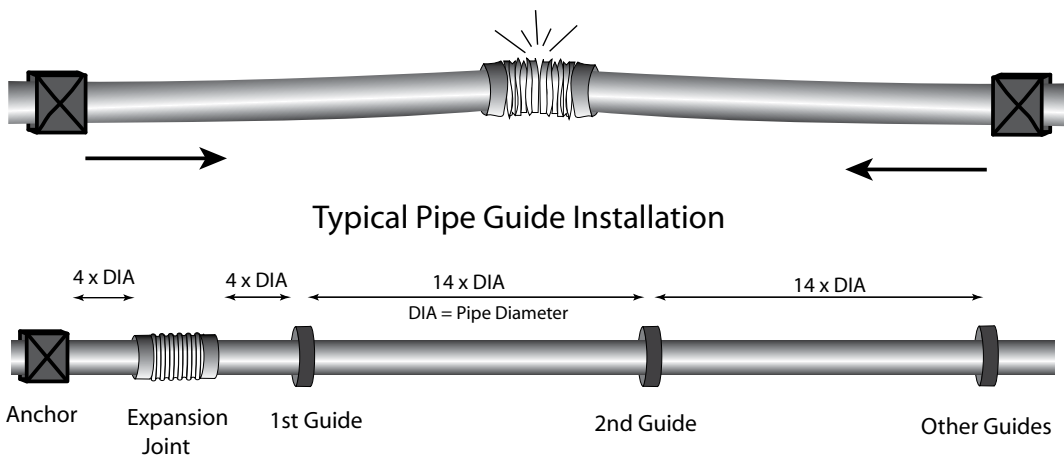
PIPE GUIDES - For Use With Expansion Joints

Proper pipe guiding is essential to an installation of expansion joints or pipe loops. When properly applied, the guides will prevent the pipe from buckling, and are required to ensure the manufacturer's warranty. Flexicraft provides the proper pipe guides to augment our full offering of metal and rubber expansion joints.

Guides normally permit axial movement of the pipe, while restraining both lateral and angular movement. The Slidex guides also act to support, as well as guide, the pipe.

The quantity and location of the is dependent upon the proximity of the expansion joint to an anchor, the diameter of the pipe, and the length of the pipe run. See below for proper spacing.

Effects of Thermal Expansion Without Guides

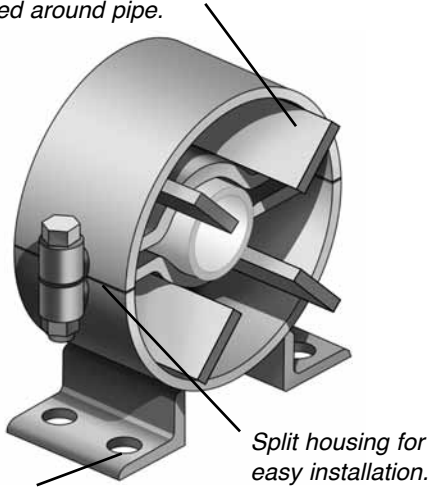


PIPE GUIDE SPACING

PIPE DIA	MAX. DISTANCE TO 1ST GUIDE	MAX. DISTANCE BTWN 2ND & 1ST GUIDE	MAX. DISTANCE BTWN SUBSEQUENT GUIDES			
			@ 50 psi	@ 100 psi	@ 150 psi	@ 300 psi
1"	0' 4"	1' 4"	21'	15'	12'	10'
1-1/4"	0' 5"	1' 5"	23'	17'	13'	12'
1-1/2"	0' 6"	1' 9"	28'	20'	17'	13'
2"	0' 8"	2' 4"	32'	23'	18'	15'
2-1/2"	0' 10"	2' 11"	35'	28'	22'	20'
3"	1' 0"	3' 6"	38'	28'	23'	17'
3-1/2"	1' 2"	4' 1"	45'	35'	27'	19'
4"	1' 4"	4' 8"	52'	38'	31'	22'
5"	1' 8"	5' 8"	63'	45'	38'	25'
6"	2' 0"	7' 0"	68'	48'	40'	28'
8"	2' 8"	9' 4"	87'	62'	45'	28'
10"	3' 4"	11' 8"	107'	75'	60'	48'
12"	4' 0"	14' 0"	118'	85'	70'	50'
14"	4' 8"	16' 4"	122'	88'	72'	55'
16"	5' 4"	18' 8"	137'	96'	80'	60'
18"	6' 0"	21' 0"	145'	105'	85'	65'
20"	6' 8"	23' 4"	160'	118'	90'	70'
24"	8' 0"	28' 0"	181'	125'	105'	75'

For guide spacing using copper tube, please contact factory.

"Spider" spacers center pipe in housing and are sized to allow insulation to be packed around pipe.



Feet can be bolted or welded to structure.

Split housing for easy installation.

Model Spider10 Guide

Matched to pipe size and insulation thickness to be added, the spider guide provides lateral stability to the pipe to prevent buckling by ensuring only axial pipe movement of the expansion joint. Extended spiders are available.

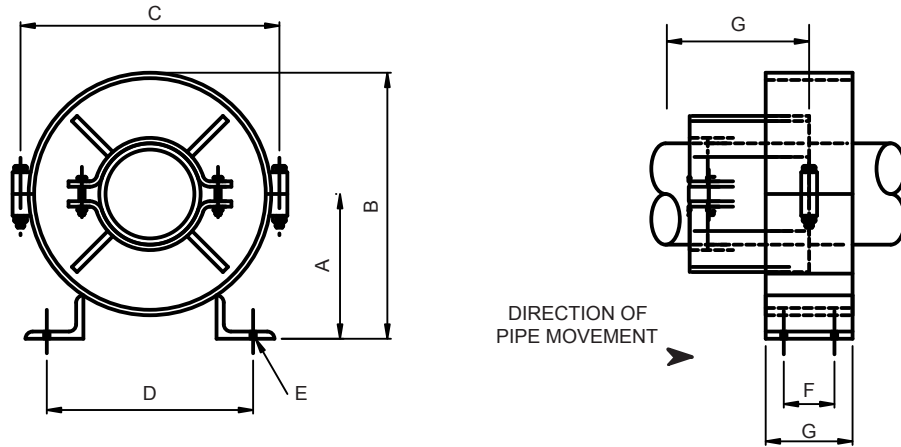
These guides are not designed to support the weight of the pipe. Available for pipe 1 inch to 24 inch in diameter and for inserting insulation thicknesses 0 to 4 inches. Add die-electric spacers for copper pipe.

Model Selection Chart For Style IV Guides

Using insulation thickness, choose the Model # from this chart and then refer to the drawing on the following page for details. Die-electric spacers recommended for copper pipe.

DIAMETER (in)	ALLOWED INSULATION THICKNESS						
	1"	1-1/2"	2"	2-1/2"	3"	3-1/2"	4"
1/2	23	23	24	26	26	26	27
3/4	23	24	25	26	26	27	27
1	23	24	25	26	26	27	27
1-1/4	23	24	25	26	26	27	27
1-1/2	24	24	25	26	26	27	27
2	24	25	26	26	27	27	28
2-1/2	25	25	26	26	27	27	28
3	25	26	26	27	27	28	28
4	26	26	27	27	28	28	29
5	27	27	27	28	28	29	30
6	27	27	28	28	29	30	30
8	28	28	29	30	30	31	31
10	30	30	30	31	32	32	32
12	31	31	31	32	32	33	33
14	32	32	32	32	33	33	34
16	33	33	33	33	34	34	35
18	34	34	34	34	35	35	-
20	35	35	35	35	36	36	36
24	36	36	36	36	-	-	-

SPIDER 10 PIPE GUIDE



CHOOSE MODEL BASED ON ALLOWED INSULATION THICKNESS & DIAMETER
SPECIFY GUIDE BY BOTH MODEL NO. AND DIAMETER

MODEL NO.	DIMENSIONS (in)							MAX MVMNT (in)	WEIGHT (lbs)
	A	B	C	D	E	F	G		
23	3-1/2	5-7/8	6-1/8	4-1/8	5/8	1-3/4	3	4	7
24	4	6-3/4	7-1/8	4-3/8	5/8	1-3/4	3	4	8
25	4-3/8	7-5/8	8-1/8	5-1/8	5/8	1-3/4	3	4	9
26	5-1/4	9-1/4	10-1/8	6-1/8	5/8	1-3/4	3	4	11
27	6-1/4	11-5/8	12-1/8	7	5/8	2-3/4	4	6	17
28	7	13-3/8	14-1/8	8-1/4	5/8	2-3/4	4	6	20
29	7-7/8	15-1/8	16-1/8	9-7/8	3/4	4	6	8	40
30	8-7/8	17	18-1/8	10-7/8	3/4	4	6	8	48
31	9-3/4	18-3/4	20-1/8	11-7/8	3/4	4	6	8	54
32	10-7/8	21	22-1/8	11-3/4	3/4	6	8	8	61
33	12-1/8	23-1/8	24-1/8	14-1/2	7/8	6	8	8	89
34	13	25	26-1/8	15-1/2	7/8	6	8	8	102
35	14-3/4	27-3/4	28-1/8	17-1/8	1-1/8	6	8	12	110
36	16-1/2	31-1/2	32-1/8	19-1/4	1-1/8	6	8	12	150

Notes: Material is carbon steel, with one coat shop paint.
Longer maximum movement Spider 10 guides are available.
Models 23 to 28 (2) bolts on housing connection; Models 29 to 36 (4) bolts.
Guides are not designed for supporting piping (see slide guides).

CUSTOMER: _____
PROJECT: _____
ENGINEER: _____
CNTRCTR: _____
P.O. NO: _____



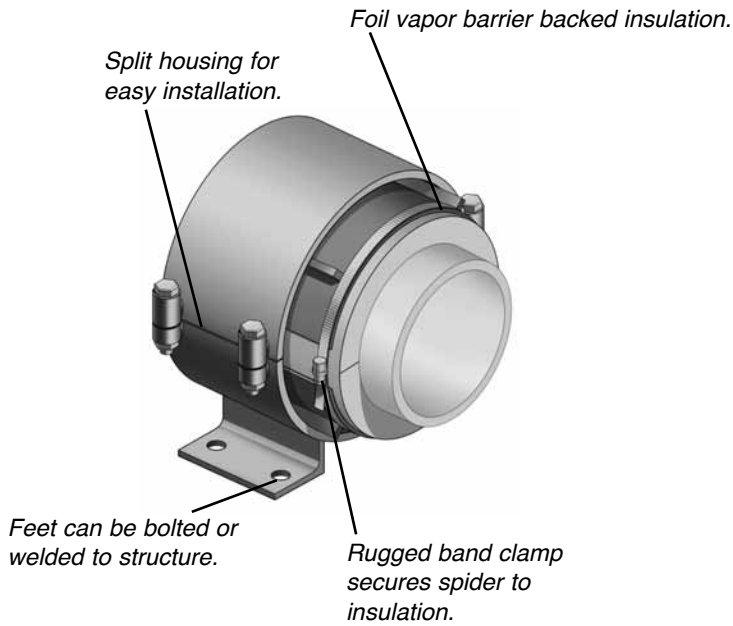
DESCRIPTION:

SPIDER 10 PIPE GUIDE

DRAWN BY:
PB

DATE:
04/10

DRAWING NO:
SPIDER10-1



Model Spider10PI Pre-Insulated Series

Pre-insulated pipe guides deliver maximum insulation effectiveness and energy savings. The spider guide provides lateral stability to the pipe to prevent buckling and to ensure axial pipe movement in and out of the expansion joint.

These guides are not designed to support the weight of the pipe. Maintenance free. Sizes up to 18 inch pipe with 6 inch axial movement.

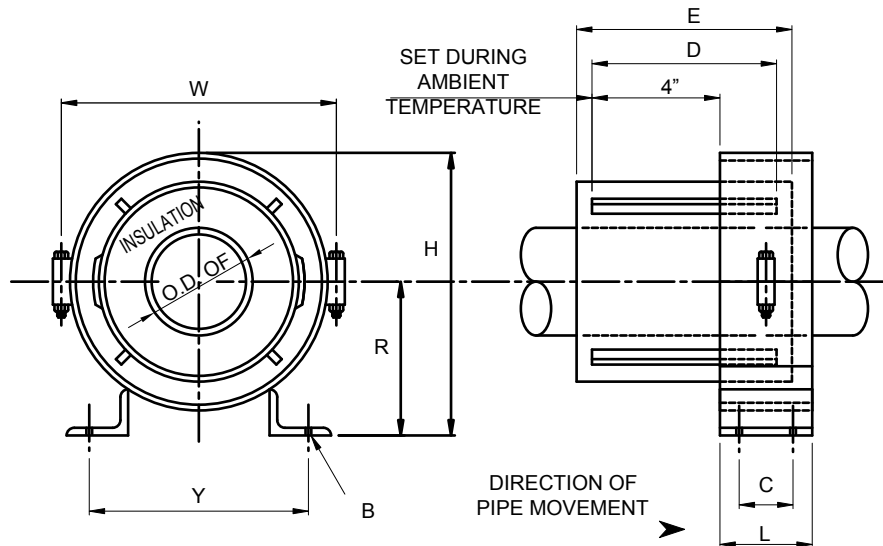
100% insulation coverage, with no pipe to metal contact.

Pre-Insulated Series Model Selection Chart

DIAMETER (in)	INSULATION THICKNESS			
	1-1/2"	2"	3"	4"
1/2	25	26	27	28
3/4	25	26	27	28
1	25	26	27	28
1-1/4	26	26	27	28
1-1/2	26	27	28	29
2	26	27	28	29
2-1/2	27	27	28	30
3	27	27	28	30
4	27	28	29	30
5	28	28	30	31
6	28	29	30	31
8	30	30	31	32
10	31	31	32	33
12	32	32	33	34
14	32	33	34	35
16	33	34	35	-
18	34	35	36	36

Using the desired insulation thickness and pipe size, choose the model number from this chart and then refer to the pre-insulated pipe guide drawing on the following page.

SPIDER 10PI PIPE GUIDE



CHOOSE MODEL BASED ON ALLOWED INSULATION THICKNESS & DIAMETER.
SPECIFY GUIDE BY BOTH MODEL NO. AND DIAMETER

MODEL NO.	DIMENSIONS (in)							MAX MVMNT (in)	WEIGHT (lbs)
	H	R	W	Y	B	C	L		
25	7-5/8	4-1/2	8-1/8	5-1/8	5/8	1-3/4	3	6	
26	9-1/4	5-1/4	10-1/8	6-1/8	5/8	1-3/4	3	6	
27	11-5/8	6-1/4	12-1/8	7	5/8	2-3/4	4	6	
28	13-3/8	7	14-1/8	8-1/4	5/8	2-3/4	4	6	
29	15-1/8	7-7/8	16-1/8	9-7/8	3/4	4	6	6	
30	17	8-7/8	18-1/8	10-7/8	3/4	4	6	6	
31	18-3/4	9-3/4	20-1/8	11-7/8	3/4	4	6	6	
32	21	10-7/8	22-1/8	11-3/4	3/4	6	8	6	
33	23-1/8	12-1/8	24-1/8	14-1/2	7/8	6	8	6	
34	25	13	26-1/8	15-1/2	7/8	6	8	6	
35	27-3/4	14-3/4	28-1/8	17-1/8	1-1/8	6	8	6	
36	31-1/2	16-1/2	32-1/8	19-1/4	1-1/8	6	8	6	

Notes: Material is carbon steel, with one coat shop paint.
Longer maximum movement Spider 10PI guides are available.
Models 25 to 28 (2) bolts on housing connection; Models 29 to 36 (4) bolts.
Guides are not designed for supporting piping (see slide guides).

CUSTOMER: _____
PROJECT: _____
ENGINEER: _____
CNTRCTR: _____
P.O. NO: _____



DESCRIPTION:

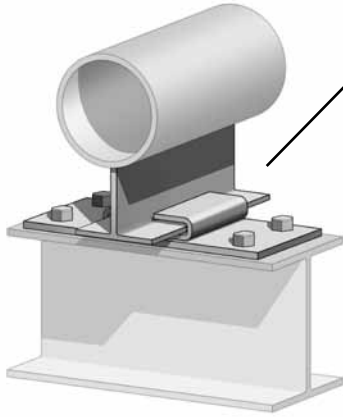
SPIDER 10PI PIPE GUIDE

DRAWN BY:
PB

DATE:
04/10

DRAWING NO:
SPIDER10PI

Illustrated slide guide shown for 1-4" pipe, welded to pipe, and with bolt down axial guide base.



Model Slidex Slide Guide Standard and Pre-Insulated

Slide guides can come in a variety of configurations. Listed below are various options for PTFE slide supports, pre-insulated PTFE slide supports, and base options.

PTFE Slide Support Options



1-4" pipe diameter
Maximum 2" insulation



5-8" pipe diameter
Maximum 3-1/2" insulation

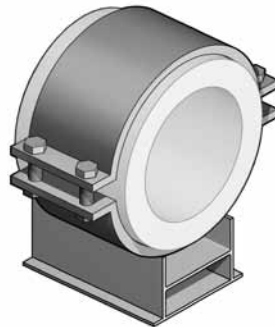


10-24" pipe diameter
Maximum 3-1/2" insulation

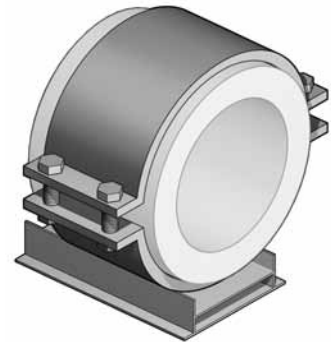
Pre-Insulated PTFE Slide Support Options



1-4" pipe diameter
1" - 4" insulation



5-8" pipe diameter
1" - 4" insulation



10-24" pipe diameter
1" - 4" insulation

Base Options



Lateral slide base
Bolt down

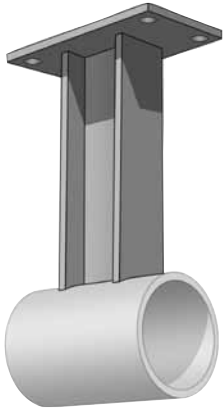


Axial guide base
Weld down



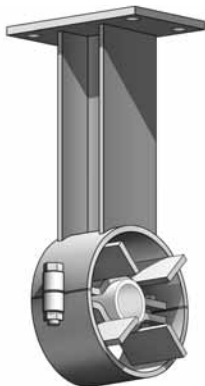
Axial guide base
Bolt down

Structural I-Beam Anchors

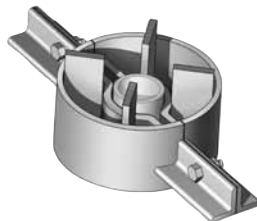


Structural I-beam anchors are pre-engineered for piping loads based on length. The anchor welds to the pipe and can be bolted or welded into place.

MIN PIPE DIA	ANCHOR MODEL#	MAX ANCHOR FORCE (KIPS)				
		BASE/STRUCTURE TO CENTER OF PIPE				
		12"	18"	24"	36"	48"
2	PAI-1	1.397	0.951	0.732	0.497	0.371
2.5	PAI-2	2.338	1.545	1.149	0.76	0.565
3	PAI-3	3.211	2.15	1.617	1.08	0.812
3	PAI-4	4.256	2.945	2.293	1.586	1.229
4	PAI-5	5.143	3.404	2.535	1.678	1.249
4	PAI-6	10.183	7.089	5.596	3.919	3.072
6	PAI-7	7.467	4.887	3.6	2.357	1.733
6	PAI-8	13.388	9.371	7.366	5.137	4.015
6	PAI-9	18.846	13.178	10.341	7.189	5.629
8	PAI-10	24.545	16.444	12.393	8.388	6.385
8	PAI-11	30.912	21.165	16.289	11.135	8.558
10	PAI-12	31.101	22.319	17.928	12.745	10.153
10	PAI-13	42.936	30.298	23.979	16.823	13.245
10	PAI-14	52.225	36.957	29.319	20.595	16.236
10	PAI-15	62.308	41.328	30.838	20.453	15.261
16	PAI-16	63.399	53.456	37.304	23.703	16.802



Pipe guide with I-Beam.



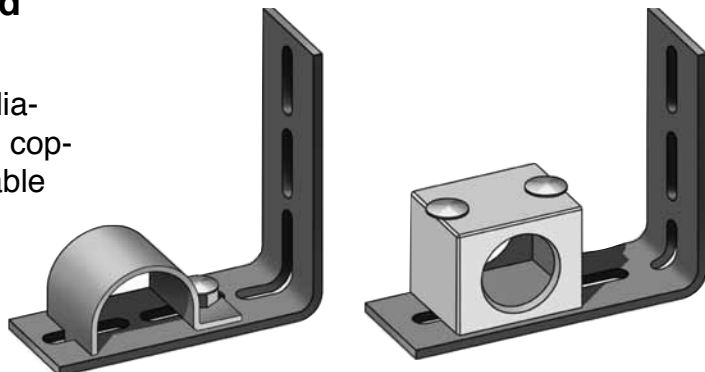
Pipe guide for risers.

Custom Fabricated Guides

Custom designs are available. Please contact factory.

Baseboard Fin Tube Guides and Anchors

Adjustable and designed to fit most radiation base board tube enclosures, these copper tube guides and anchors are available for 3/4", 1" and 1-1/4" copper tube. Maximum temperature for guides is 240°F.



Terms and Conditions

1. All quotations are subject to approval, acceptance and correction at the home office. Any errors in quotations resulting in orders will be corrected and re-submitted to the customer for their acceptance or refusal.

No prices may be made up from information other than that shown in the tables.

2. All prices are F.O.B. factory, Chicago, Illinois, and are quoted exclusive of any taxes.

Shipments boxed for trans-ocean export add 10% to total trade price.

Terms: Net 30 days from date of invoice.

3. Cancellation or alteration of an order or return of any product by Buyer may not be made without advance written consent of manufacturer and shall be subject to a cancellation charge.

A 35% minimum restocking charge shall be placed on any stocked returned goods. No returns on special orders.

4. We will not be responsible for delays in shipping due to conditions beyond our control such as strikes, fires or accidents.

5. Any claims for shortages or damaged products must be made in writing 10 days after receipt of shipment.

6. Prices subject to change without notice.

Design and Dimensional Specifications

The products illustrated reflect the design characteristics at time of printing.

Flexicraft reserves the right to change dimensions, materials or methods of construction without notice. Please contact the factory for certified prints (exact dimensions) when necessary.

Limited Warranty

All products are warranted to be free of defects in material and workmanship for a period of one year from the date of shipment, subject to the limitations below.

If the purchaser believes a product is defective the purchaser shall: (a) Notify the manufacturer, state the alleged defect and request permission to return the product. (b) If permission given, return the product with transportation prepaid. If the product is accepted for return and found to be defective, the manufacturer will, at its discretion, either repair or replace the product F.O.B. factory, within 60 days of receipt or refund the purchase price. Other than repair, replace or refund as described above, purchaser agrees that manufacturer shall not be liable

for any loss, costs, expenses or damages of any kind arising out of the product, its use, installation or replacement, labeling, instructions, information or technical data of any kind, description or product or use, sample or model, warning or lack of any of the foregoing. NO OTHER WARRANTIES, WRITTEN OR ORAL, EXPRESS OR IMPLIED, INCLUDING WARRANTIES OF FITNESS FOR A PARTICULAR PURPOSE AND MERCHANTABILITY, ARE MADE OR AUTHORIZED. NO AFFIRMATION OF FACT, PROMISE, DESCRIPTION OF PRODUCT OF USE OR SAMPLE OR MODEL SHALL CREATE ANY WARRANTY FROM MANUFACTURER, UNLESS SIGNED BY THE PRESIDENT OF MANUFACTURER. These products are not manufactured, sold or intended for personal, family or household purposes.



2315 West Hubbard Street, Chicago, Illinois 60612, Telephone 800-533-1024, 312-738-3588, Fax 312-421-6327

Distributed by: